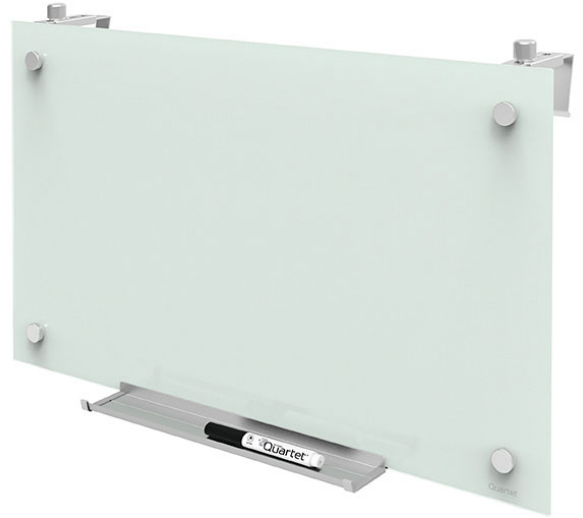


# PRODUCT SPECIFICATION SHEET

**Product Code:** QTPDEC2414  
**Brand Code:** QUARTET  
**Description:** QUARTET GLASS BOARD INFINITY 355X610MM CUBICLE  
**Category:** BOARDS AND DISPLAY PRODUCTS



## Tagline

Great ideas start here

## Catalogue Copy

Stay organized with a personal-Sized glass dry-Erase board. The magnetic glass board surface is durable and infinitely reusable to serve as an ideal note taking solution for your cubicle.

## Features and Benefits

- Tempered glass dry-Erase board will not stain or ghost to ensure clean erasability
- Glass is magnetic and offers a smooth writing surface. Use with dry-Erase makers and rare earth magn
- Frameless board design is sleek and attractive
- 610 X 335mm board size with a 16:9 aspect ratio fits perfectly in cubicles with low walls and can
- Writing in all colors is easily visible on the white glass board surface. Glass is easy to keep clea
- Two mounting hardware sets included: adjustable brackets to hang board over cubicle walls and wall m
- Magnetic glass cubicle board comes with an aluminum accessory tray, 1 quartet dry-Erase marker and 2
- Limited 15 year warranty

### Dimensions

W X L X H (mm)	413x749x51
Gross Weight (g)	3615
Product Barcode	034138299852
Unit of Measure	PC
Minimum Order Quantity	1

### Inner Carton Dimensions

Inner Unit Quantity	0
W X L X H ( )	0x0x0
Gross Weight ( )	0
Inner Barcode	

### Outer / Shipper Carton Dimensions

Outer Carton Quantity	0
W X L X H ( )	0x0x0
Gross Weight ( )	0
Outer Carton Barcode	

### Shipping Information

Lowest Possible Unit	PC
----------------------	----

### General Product Information

Variant	INFINITY 355X610MM CUBICLE
Layers/Pallet	20
Cases/Layer	4

<b>NEW SOUTH WALES</b> 2 Coronation Avenue Kings Park NSW 2148 T: 02 9674 0900 F: 02 9674 0910	<b>VICTORIA</b> 718 Geelong Rd Brooklyn VIC 3012 T: 03 8348 4800 F: 03 8348 4801	<b>QUEENSLAND</b> Unit 3/23 Overlord Place Acacia Ridge QLD 4110 T: 07 3902 4700 F: 07 3902 4711	<b>WESTERN AUSTRALIA</b> 23 Marriott Road Jandakot WA 6164 T: 08 9456 0100 F: 08 9456 0160	<b>NEW ZEALAND</b> 29 Pukekiwiri PI Highbrook Business Park East Tamaki Auckland 2013 T: 09 633 2288 F: 09 636 7272
--	--	--	--	--